

Fastening Systems for Kingspan GreenGuard®

Kingspan

Thermal-Grip® ci Prong Washer

- 2" dia. solid cap washer for use with Grip-Deck® ci screws.
- Pre-spotting prongs for easy on-the-wall screw assembly
- Flattens on surface of the insulation without tearing facer
- Optional labor-saving Grip-Lok® auto-feed system available

Grip-Deck® ci Screw

- Self-drilling or HiLo threads available for steel or wood studs
- Exterior ceramic coating for corrosion resistance
- Lengths available from 1 5/8" - 6"

Grip-Lok® Autofeed Fastening System

- Labor-saving tool for attaching insulation to wood or steel stud
- Adjustable depth control to ensure proper washer compression
- For use with collated Grip-Deck® ci screws up to 3" length

Plasti-Grip® PMF Anchor

- Insulation attachment to masonry substrates
- Simple installation. Pre-drill hole, then tap flush with hammer
- Plastic design reduces thermal-bridging
- No screws or adhesives required

Thermal-Grip MVA® Masonry Veneer Anchor

- Air & water penetration resistance
- Thermal-break performance
- Labor & cost savings - Made in USAs



*Patented or patent pending

© Kingspan and the Lion Device are Registered Trademarks of the Kingspan Group plc in the US, Canada and other countries. All rights reserved.

TRUFast
WALLS

130 Graham St. SW
Grand Rapids, MI 49503
(616) 454-3100

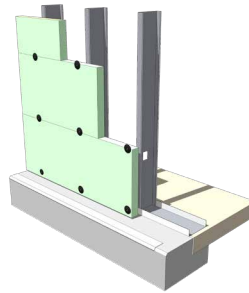
wallssales@trufast.com
www.trufastwalls.com



Fastening Systems for Kingspan GreenGuard®

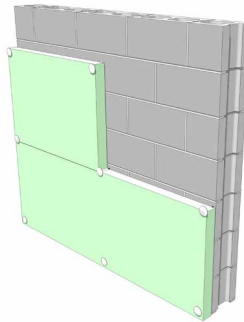


THERMAL-GRIP® ci Prong Washer



- THERMAL-GRIP® ci Prong Washer
1. Specified fastener spacing of 16" x 16" in the field and every 12" around doors, windows and perimeter
 2. Pre-spotting prongs for easy "on-the-wall" screw assembly
 3. Compress washer until flat. Do not overdrive

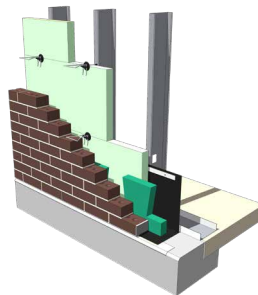
PLASTI-GRIP® PMF



| PMF Size | Insulation Thickness |
|----------|----------------------|
| 2" | 1/2" - 3/4" |
| 2 3/4" | 1" - 1 1/2" |
| 3 1/2" | 1 1/2" - 2" |
| 4 1/2" | 2 1/2" - 3" |
| 5 3/8" | 3 1/2" - 4" |

- PLASTI-GRIP® PMF Anchor
1. Recommended fastener spacing of 24" x 24" or dependent on short & long term exposure.
 2. Simple installation
 3. Pre-drill with 5/16" dia. masonry bit, then tap flush with hammer
 4. No pins, screws or adhesives required

THERMAL-GRIP® Brick Tie Washer



THERMAL-GRIP MVA® Masonry Veneer Anchor

1. Typical spacing of 16" x 16" (Check with local building codes)

*Patented or patent pending

© Kingspan and the Lion Device are Registered Trademarks of the Kingspan Group plc in the US, Canada and other countries. All rights reserved.



130 Graham St. SW
Grand Rapids, MI 49503
(616) 454-3100

wallssales@trufast.com
www.trufastwalls.com

