

Fastening Systems for Carlisle R2+



Thermal-Grip® ci Prong Washer

- 2" dia. solid cap washer for use with Grip-Deck® ci screws.
- Pre-spotting prongs for easy on-the-wall screw assembly
- Flattens on surface of the insulation without tearing facer
- Optional labor-saving Grip-Lok® auto-feed system available

Grip-Deck® ci Screw

- Self-drilling or HiLo threads available for steel or wood studs
- Exterior ceramic coating for corrosion resistance
- Lengths available from 1 5/8" - 6"

Grip-Lok® Autofeed Fastening System

- Labor-saving tool for attaching insulation to wood or steel stud
- Adjustable depth control to ensure proper washer compression
- For use with collated Grip-Deck® ci screws up to 3" length

Plasti-Grip® PMF Anchor

- Insulation attachment to masonry substrates
- Simple installation. Pre-drill hole, then tap flush with hammer
- Plastic design reduces thermal-bridging
- No screws or adhesives required

Thermal-Grip® Brick-Tie Washer

- For use with Heckmann Pos-I-Tie® and Wire-Bond Sure-Tie® masonry veneer anchoring systems
- 2" dia. washer secures insulation
- Designed to reduce moisture and air infiltration at anchor points

*Patented or patent pending



130 Graham St. SW
Grand Rapids, MI 49503
(616) 454-3100

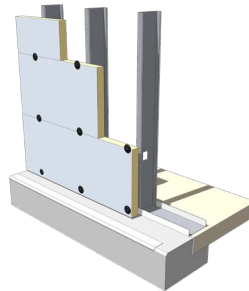
wallssales@trufast.com
www.trufastwalls.com



Fastening Systems for Carlisle R2+

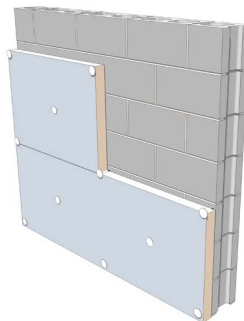


THERMAL-GRIP® ci Prong Washer



- THERMAL-GRIP® ci Prong Washer
1. Specified fastener spacing of 16" x 16" in the field and every 12" around doors, windows and perimeter
 2. Pre-spotting prongs for easy "on-the-wall" screw assembly
 3. Compress washer until flat. Do not overdrive

PLASTI-GRIP® PMF

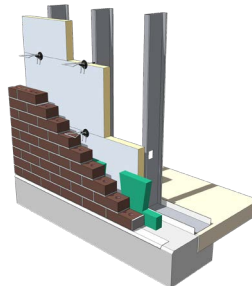


PMF Size	Insulation Thickness
2"	1/2" - 3/4"
2 3/4"	1" - 1 1/2"
3 1/2"	1 1/2" - 2"
4 1/2"	2 1/2" - 3"
5 3/8"	3 1/2" - 4"

PLASTI-GRIP® PMF Anchor

1. Recommended fastener spacing of 24" x 24" or dependent on short & long term exposure.
1. Simple installation
2. Pre-drill with 5/16" dia. masonry bit, then tap flush with hammer
4. No pins, screws or adhesives required

THERMAL-GRIP® Brick Tie Washer



THERMAL-GRIP® Brick Tie Washer

1. Typical spacing of 16" x 16" (Check with local building codes)

*Patented or patent pending



130 Graham St. SW
Grand Rapids, MI 49503
(616) 454-3100

wallssales@trufast.com
www.trufastwalls.com

