

Trufast Walls Fastening Systems for Owens Corning® Thermafiber®



Plasti-Grip® PMF Anchor

- For masonry applications
- Easy installation
- Pre-drill with 5/16" masonry bit
- Tap flush with hammer
- Prevents thermal-bridging
- No screws or adhesives required

PMF Size	Insulation Thickness
2"	½" - ¾"
2 ¾"	1" - 1 ½"
3 ½"	1 ½" - 2"
4 ½"	2 ½" - 3"
5 ¾"	3 ½" - 4"
6 ¼"	4 ½" - 5"



Grip-Lok® MW Plate

- Secures up to 5" of mineral wool
- Shoot it, screw it, or nail it
- All substrates including wood, metal and masonry
- Unlike adhesive pins, provides permanent attachment
- Mill galvanized to prevent corrosion
- Curled sides provide rigidity and prevent sharp edges at perimeter



Grip-Deck TubeSeal™

- Seals blind fastener penetrations of a WRB or air-barrier
- Available in multiple lengths for various insulation thicknesses
- UV resistant polyurethane tube construction is suitable for all weather climates
- Available pre-assembled with various Grip-Deck® screws including SDS (self-drilling) or HiLo thread with various Rodenhouse washers.



Thermal-Grip® Masonry Veneer Anchor

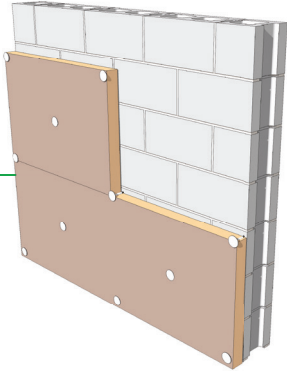
- Maintains air-barrier performance
- Uniquely designed for minimal thermal-bridging
- Available for all substrates
- Wire tie design allows for easy one hand assembly



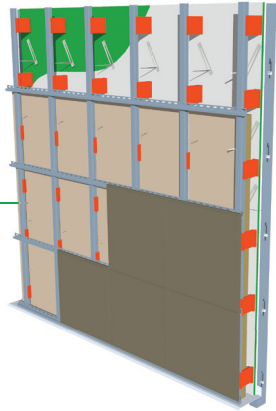
Trufast Walls Fastening Systems for Owens Corning® Thermafiber®



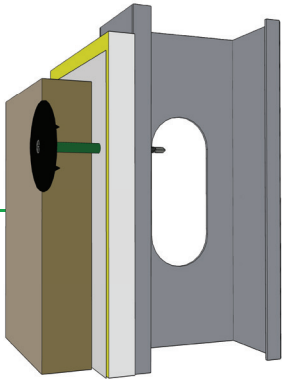
PLASTI-GRIP® PMF



GRIP-LOK® MW Plate



GRIP-DECK TUBESEAL™



THERMAL-GRIP® MASONRY VENEER ANCHOR

