

Distributed by:

RODENHOUSE



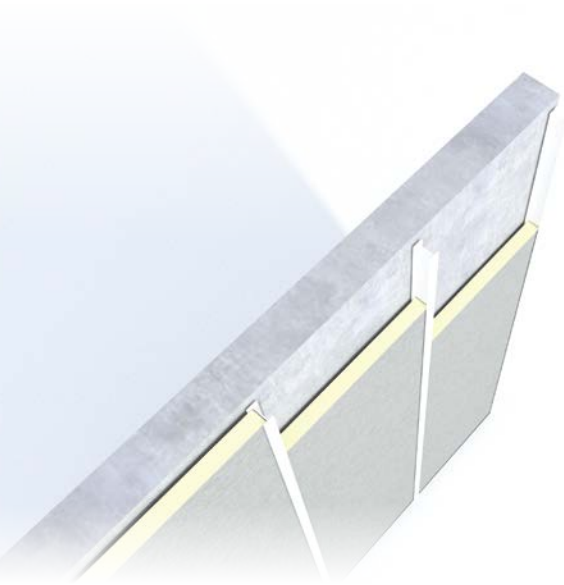
Fastening Systems

VICTORY BEAR

TRACK SYSTEM

INSULATION ATTACHMENT

Fast. Clean. Finished Appearance.



ENERGY EFFICIENT DESIGN

-Flex-Tite technology seals tightly against the insulation board to reduce thermal loss at seams

REDUCES COST

-System is designed to withstand the impact of nail guns and saws, saving labor cost

CONVENIENT FASTENING

All Flex-Tite and Quick Clip systems have fastening leg for easy access with nail gun

CAN BE PAINTED

-If custom color is required, Victory Bear joint cover can be primed and painted

INSTALLATION

Step 1 - Align the Flex-Tite J-Channel horizontally at the desired height and check for level. Fasten into place.

Step 2 - Align the Flex-Tite female clip vertically at desired spacing and check for plumb. Nail 3/4 to 1" into place.

Step 3 - Install insulation and Flex-Tite male, then repeat.

