

Rodenhouse Fastening Systems for ROCKWOOL™ Mineral Wool



Grip-Lok® Hurricane Washer

- Large 3" dia.
- Carbon black UV stabilizers
- Large dia. prevents compression of insulation
- Compatible with nails and screws
- Grip-Deck® ceramic coated screws for corrosion protection



Plasti-Grip® PMF Anchor

- For masonry applications
- Easy installation
- Pre-drill with 5/16" masonry bit
- Tap flush with hammer
- Prevents thermal-bridging
- No screws or adhesives required

PMF Size	Insulation Thickness
2"	1/2" - 3/4"
2 3/4"	1" - 1 1/2"
3 1/2"	1 1/2" - 2"
4 1/2"	2 1/2" - 3"
5 3/8"	3 1/2" - 4"
6 1/4"	4 1/2" - 5"



Thermal-Grip® Impaling Fastener

- Mechanical attachment of mineral wool insulation
- Flexible 2" dia. washer helps seal air barrier penetration
- Solid plastic washer reduces thermal-bridging
- Reduces penetrations - attaches wrap and insulation
- For use with sheet and fluid applied air barriers
- Optional retaining disk secures insulation to pin



Grip-Lok® MW Plate

- Secures up to 5" of mineral wool
- Shoot it, screw it, or nail it
- All substrates including wood, metal and masonry
- Unlike adhesive pins, provides permanent attachment
- Mill galvanized to prevent corrosion
- Curled sides provide rigidity and prevent sharp edges at perimeter
- Optional gasketed screw helps seal penetration of WRB / air barrier



Grip-Deck TubeSeal™

- Seals blind fastener penetrations of a WRB or air-barrier
- Available in multiple lengths for various insulation thicknesses
- UV resistant polyurethane tube construction is suitable for all weather climates
- Available pre-assembled with various Grip-Deck® screws including SDS (self-drilling) or HiLo thread with various Rodenhouse washers.



Thermal-Grip® Masonry Veneer Anchor

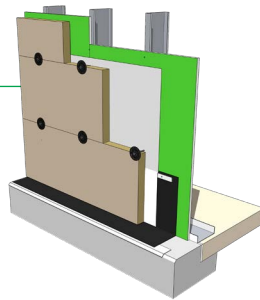
- Maintains air-barrier performance
- Uniquely designed for minimal thermal-bridging
- Available for all substrates
- Wire tie design allows for easy one hand assembly



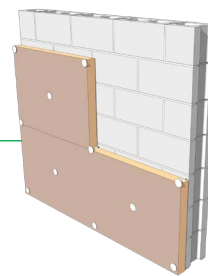
Rodenhouse Fastening Systems for ROCKWOOL™ Mineral Wool



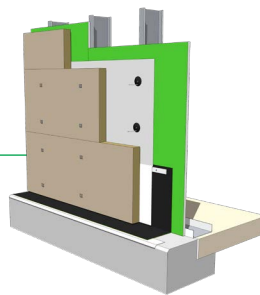
GRIP-LOK® Hurricane Washer



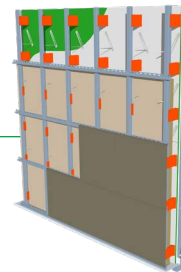
PLASTI-GRIP® PMF



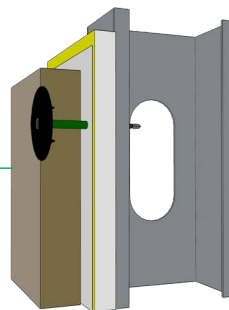
THERMAL-GRIP® Impaling Fastener



GRIP-LOK® MW Plate



GRIP-DECK TUBESEAL™



THERMAL-GRIP® MASONRY VENEER ANCHOR

